

NOTE:
All dimensions are in meter.

AHU CALCULATION:
CFM = Area x Floor Height
= 16,457 x 4.5 = 74,056.5 Cu.m
CFM = $\frac{74,056.5 \times \text{No. of air changes}}{60}$
= $\frac{74,056.5 \times 10}{60}$ = 12,342.75

FOR AIR LEAKAGE:
= 0.821 X Area of leakage
Add 10% of Safety Factor,
CFM = $\frac{12,342.75 \times 10}{10}$ = 1,234,275
= $\frac{12,342.75 \times 10}{10}$ = 1,234,275
= 13,577,025 CFM

FOR 7 FLOORS:
= 13,577,025 X 7
= 95,039,175 CFM
6 NO.s of AHU per Floor
1 AHU = 2,262,837.5 CFM

TOILET CALCULATION:

Persons	M	F
1-15	1	1
55-1-600	15	24
351-400	10	16

Thus for 1000 people at one floor,
Toilets (Male) = 15 + 10 = 25
Toilets (Female) = 24 + 16 = 40

LIFT CALCULATION & ITS SPECIFICATION

- KONE ELEVATORS : 15 Persons Capacity
- NAME : KONE I Monospace
- Machine Room Less
- Maximum Speed : 1.75 m/s
- Maximum Travel : 90 m
- Maximum Load : 1020 kg
- Car Width : 1100 mm
- Car Depth : 2150 mm
- Door Opening : 900 mm
- Shaft Width : 1950 mm
- Shaft Depth : 2450 mm

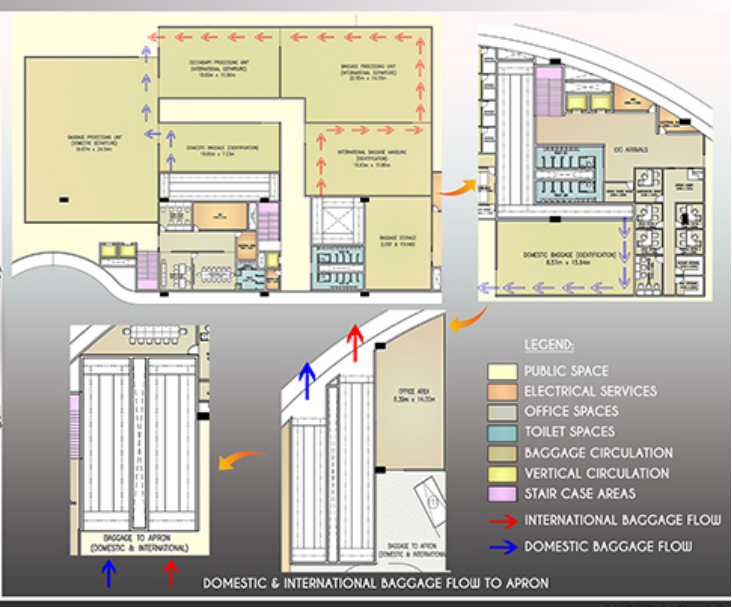
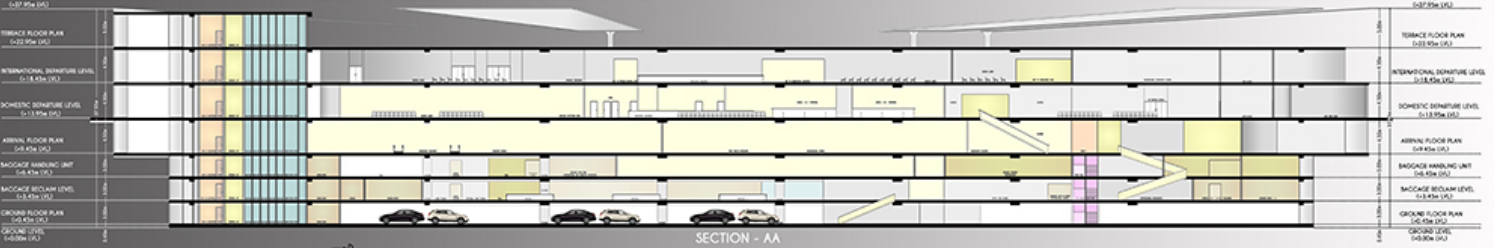
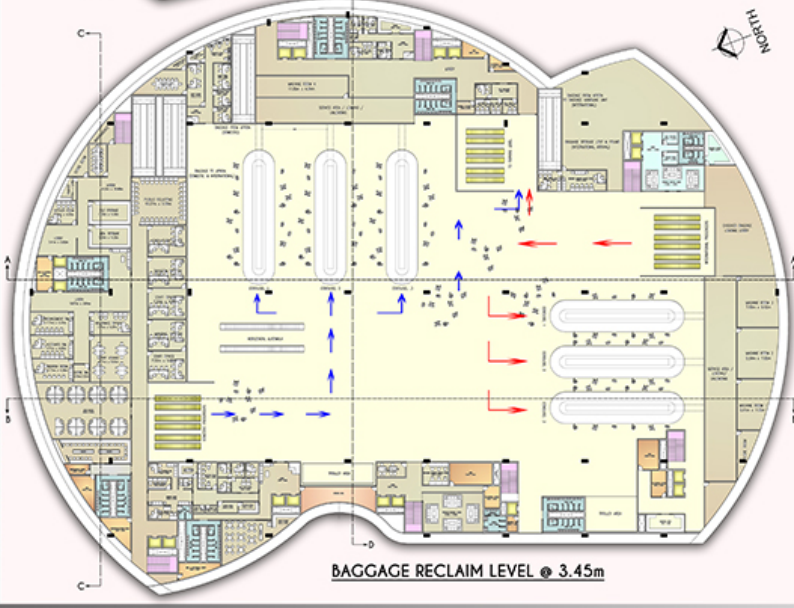
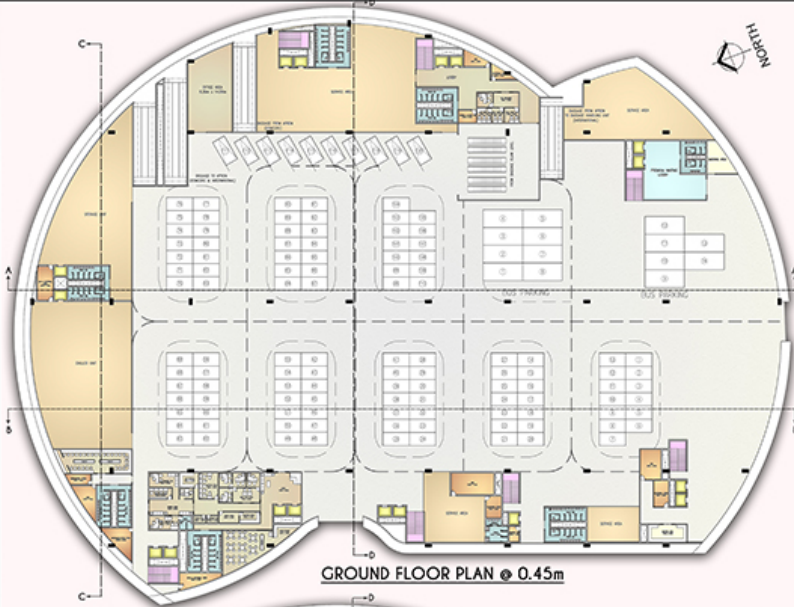
Thus 13 Passengers Lift and 2 Service lift
At a time, 195 Passengers at Peak hrs.

PARKING CALCULATION:

- ON SITE PARKING : 10% of site area
- TAXIS : 80 Nos.
- BUSES : 15 Nos.
- COACHES : 10 Nos.
- BATTERY VEHICLE : 50 Nos.

GROUND FLOOR PARKING:

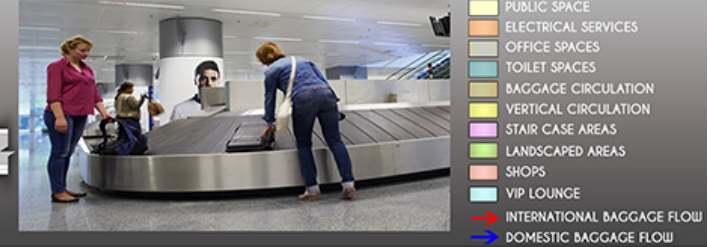
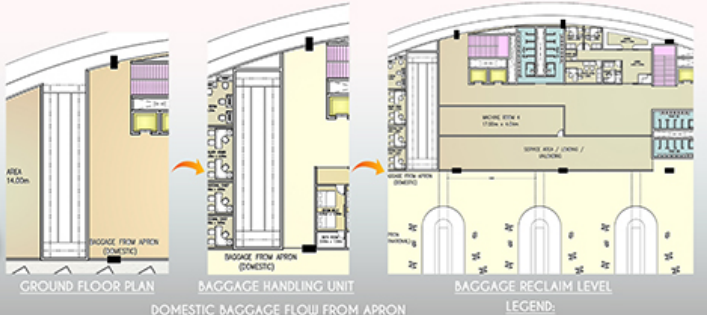
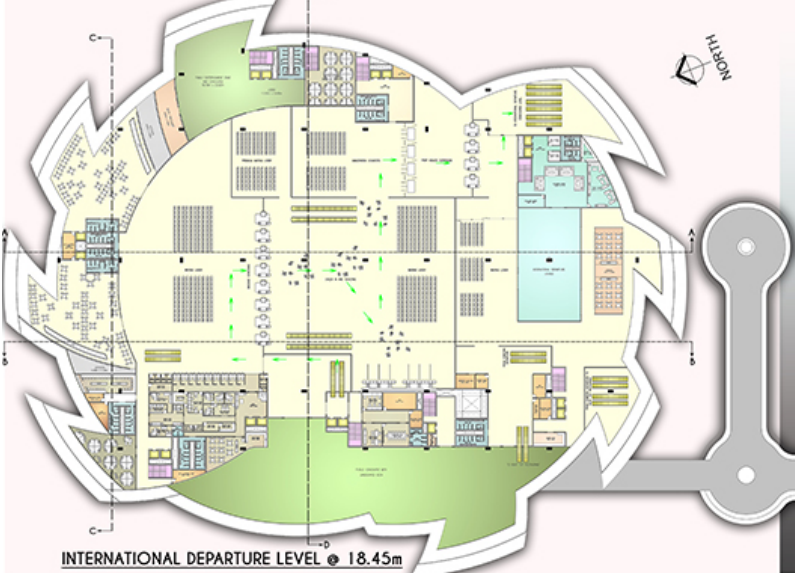
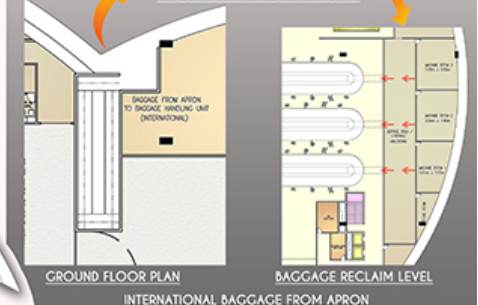
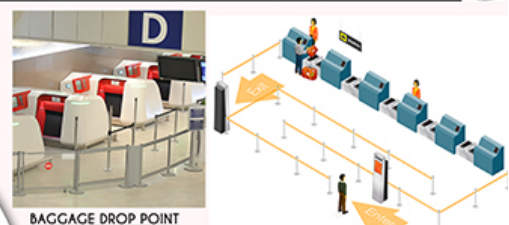
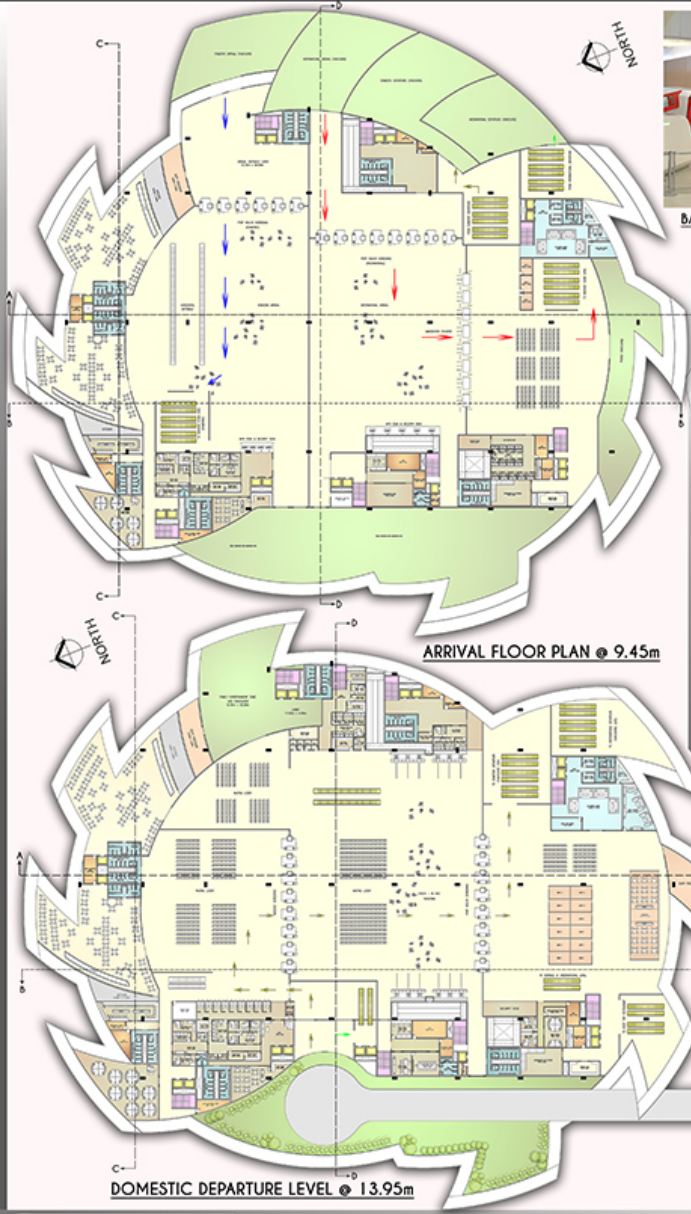
- FOUR WHEELER : 120 Nos.
- TWO WHEELER : 100 Nos.
- Ground Floor Extension Parking: 60 Nos.

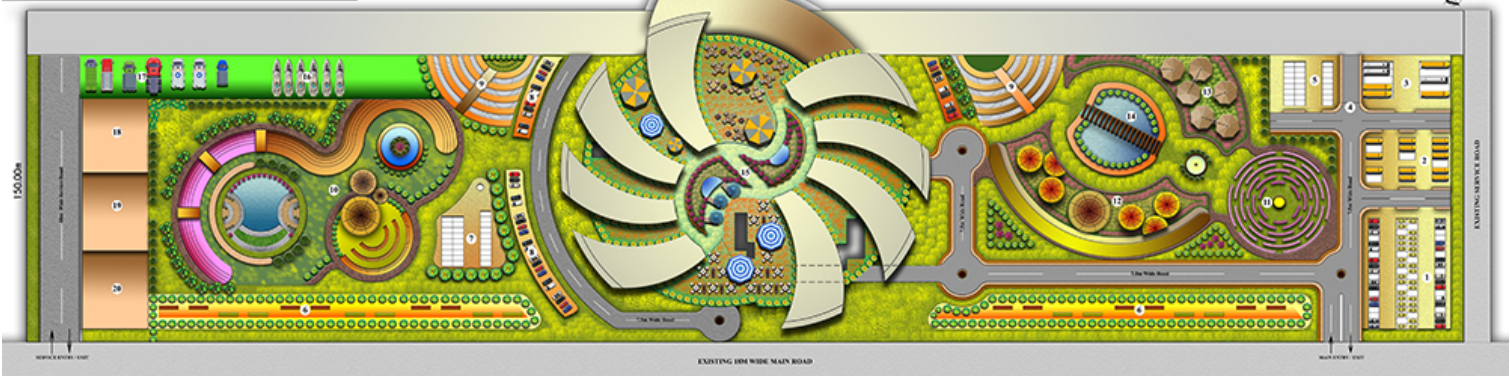
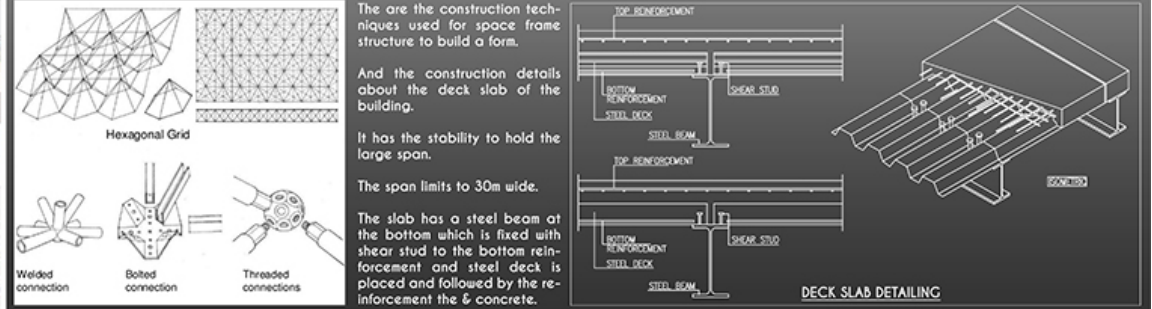
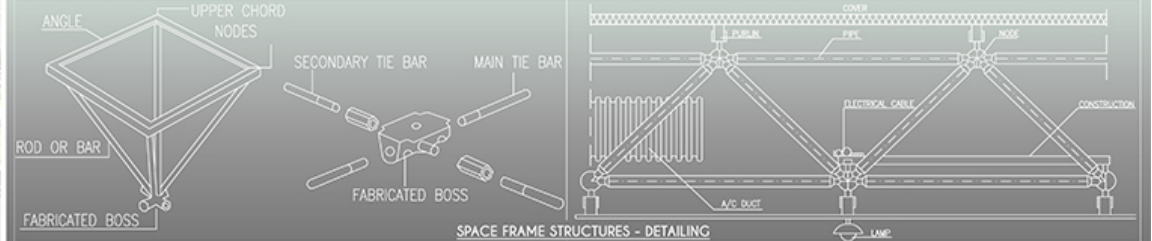
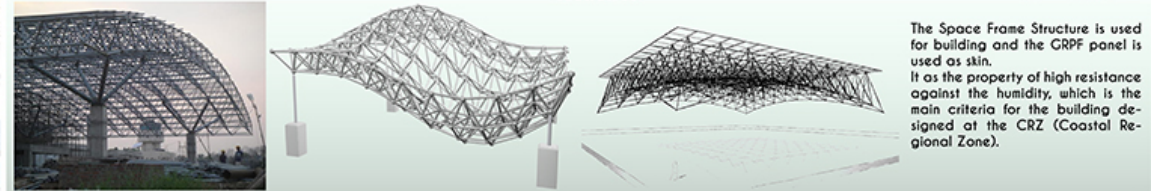
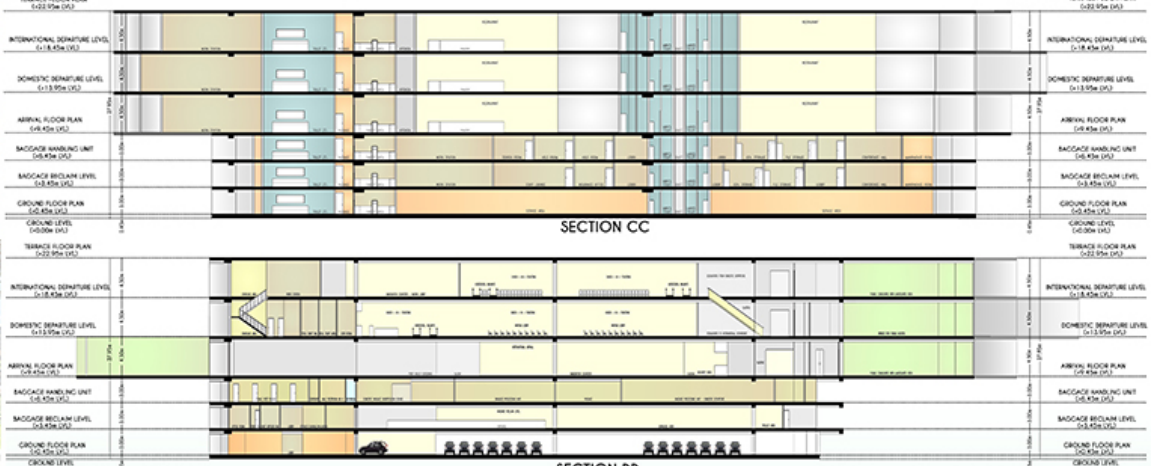
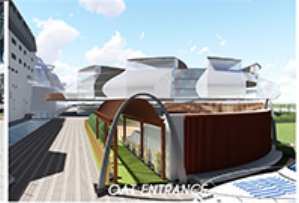
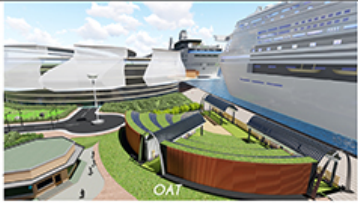
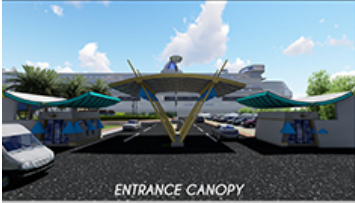


- LEGEND:**
- PUBLIC SPACE
 - ELECTRICAL SERVICES
 - OFFICE SPACES
 - TOILET SPACES
 - BAGGAGE CIRCULATION
 - VERTICAL CIRCULATION
 - STAIR CASE AREAS
 - INTERNATIONAL BAGGAGE FLOW
 - DOMESTIC BAGGAGE FLOW



NO. OF FLOORS :
GROUND FLOOR AREA : 12,964 Sq.m
BAGGAGE RECLAIM LEVEL AREA : 12,964 Sq.m
BAGGAGE HANDLING UNIT AREA : 12,964 Sq.m
ARRIVAL AREA : 16,446 Sq.m
DOMESTIC DEPARTURE FLOOR AREA : 16,457 Sq.m
INTERNATIONAL DEPARTURE FLOOR AREA : 15,989 Sq.m
TOTAL FLOOR AREA : 87,784 Sq.m





- LEGEND:
1. TAXI PARKING
 2. BUS PARKING
 3. COACH PARKING
 4. GATE 2
 5. BATTERY VEHICLE
 6. OSR
 7. BATTERY VEHICLE CHARGING POINT
 8. GROUND FLOOR EXTENSION PARKING
 9. VIEWING DECK
 10. LANDSCAPED AREA
 11. MAZE GARDEN
 12. OPEN RESTAURANTS
 13. KIOSKS
 14. WATER BRIDGE
 15. TERMINAL BUILDING
 16. YATCH PARKING
 17. EMERGENCY VEHICLE PARKING
 18. LUTPI
 19. FIRE STATION
 20. STP



AREA STATEMENT:
 Plot Extent : 97,500 sq.mt
 Plot Coverage : 75% (FAR : 73,125 sq.mt)
 Maximum height of the building : 18m (abutting Road width) * 1.5 = 27m
 Maximum FSI : 1.0
 Total Built up Area : 97,500 sq.mt
 Floor Foot Print for a single floor : 19,500 sq.mt
 Parking On site : 9000 sq.mt
 OSR 10% : 9,750 sq.mt
 Landscaped Area : 25,000 sq.mt
 Future Development : 9,875 sq.mt